

1:20,000 RECONNAISSANCE FISH AND FISH HABITAT INVENTORY
CULLON CREEK
470-245700-

KISPIOX STUDY AREA
FISHERIES / INTERPRETIVE MAP
SKEENA CELLULOSE INC.
KISPIOX FOREST DISTRICT
1999

MAPSHEET# 103P080 Map 3 of 11

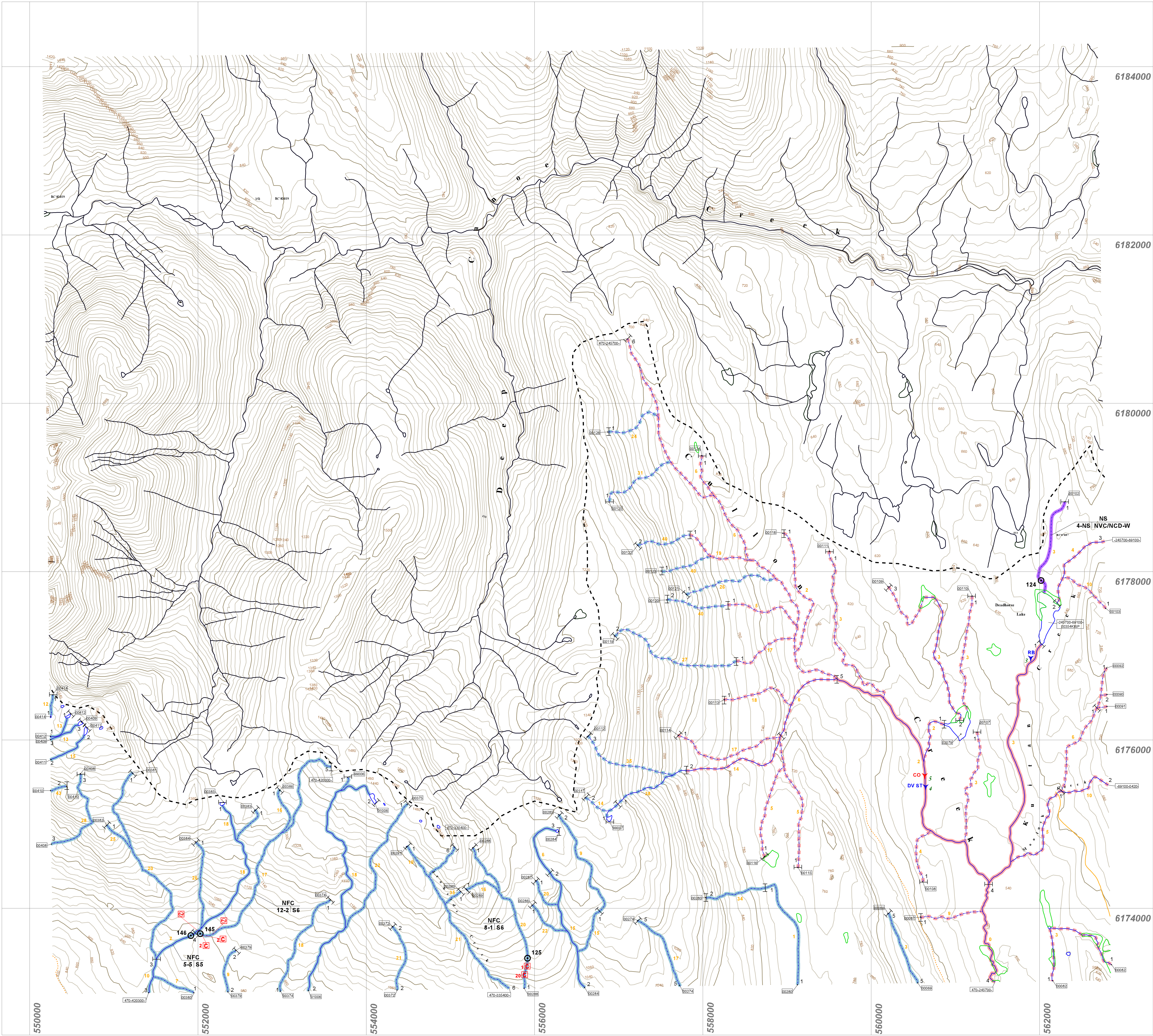
10000 0 1000 2000 Meters

Scale: 1:20,000
Contour Interval (20m) Projection UTM

Date: 2000/03/09 (yyyy/mm/dd)

Company: EL of TRITON Environmental Consultants Ltd.

N
W
E
S



STREAM INFORMATION SUMMARY

12345 Interim Locational Point (ILP)

123-123456-12345 Watershed Code

18 Reach Gradient

15 Sample Site ID

Sample Site

Stream Reach Boundary

CO DV RB
2-12 S2

Channel Properties

Channel Width

Channel Depth

Stream Classification () Inferred

123-123456-12345 Watershed Code

123456 Watersbody Identifier

Lake (L) or Wetland (W)

Surface Area

Maximum Depth

pH

Conductivity

TDS

Lateral Area

L - 175 - 8.0 - 6.8 - 29 - 20 - 15

CSU NFC NSC PCC RSC RB WSU

Fish Code(s)

Obstructions

Beaver Dam

Falls

Persistent Debris Accumulation

Cascade

Culvert

Dam

Features

Eroded Bank

Alluvial Fan

Colluvial Fan

Talus Cone

Rock Outcrop

Slumping Bank

Bridge

General Crossing

Landslide Debris

Landslide Area

Boulder Garden

Branded Stream

Rapids

Wetland / Marsh

Subsurface Flow

Tributary

Dewatered Section

Side Channel

Enhancement / Management Activities

Fisheries Sensitive Zone

WSC Information

12AB123 Hydrometric station

Stream Classification

Fish Present (Confirmed)

Fish Not Present (Confirmed)

No Visible Channel (NVC) / Non-Classified Drainage-Wetland (NCD-W)

Fish Present (Inferred)

Fish Not Present (Inferred)

TRIM Base Map Anomalies

Field-Identified Stream

Base Map Discontinuity

Base Map Features

River / Stream - intermittent

River / Stream - intermittent

River / Stream - indefinite

Lake

Lake - intermittent

Lake - indefinite

Marsh

Swamp

Glacier

Icefield

Sand / Gravel Bar

Island

Road - loose surface

Road - rough surface

Index Contour

Index Contour - indefinite

Project Boundary

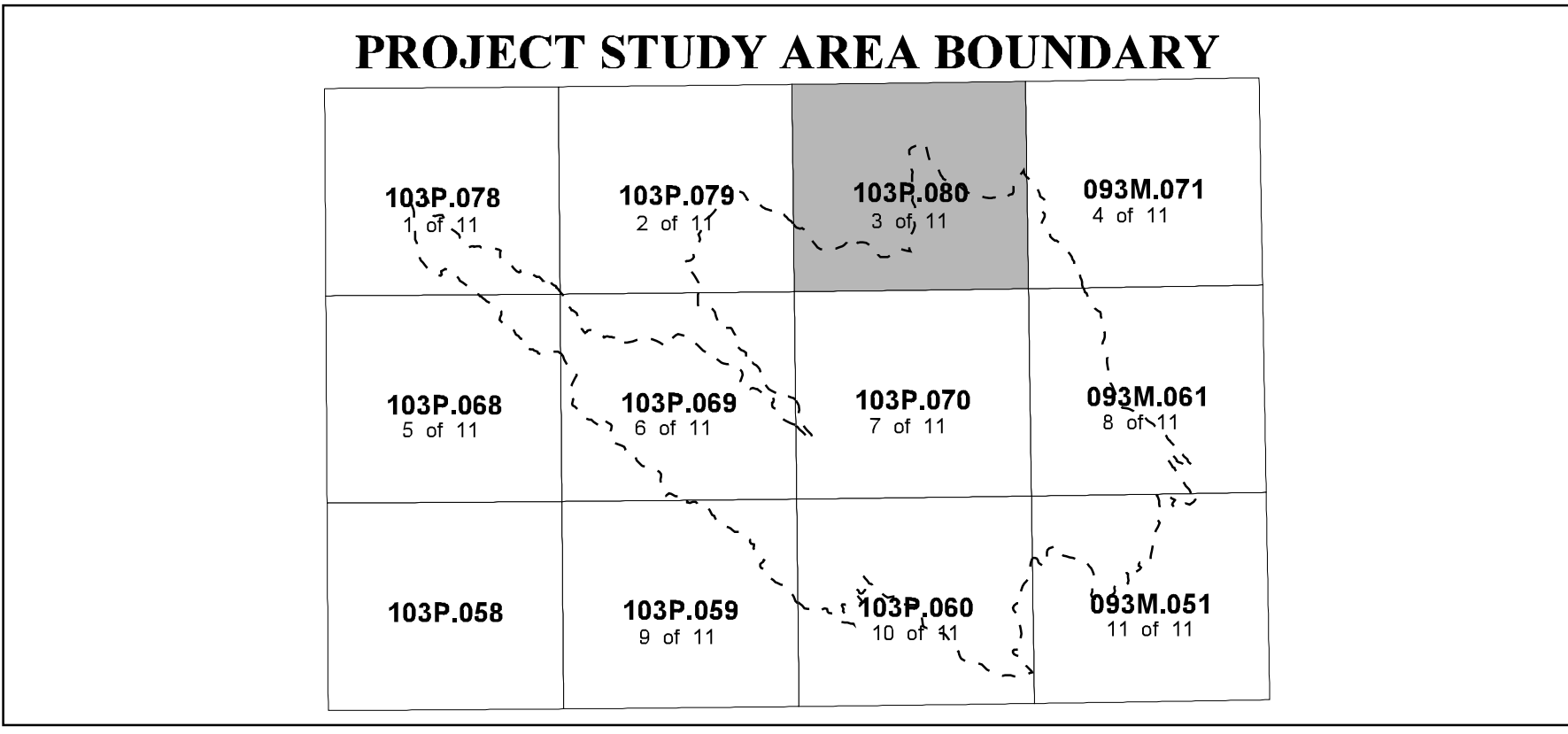
* NOTE : Reach Gradients were calculated from TRIM maps during planning Phase 1 2 3 of this project.

FISH SPECIES

CODE	DESCRIPTION
NFC	No Fish Caught
NS	Not Sampled
BT	Bull Trout
CO	Coho Salmon
CT	Cutthroat Trout (General)
DV	Dolly Varden
LNC	Longnose Dace
NSC	Northern Squawfish
MW	Mountain Whitefish
RB	Rainbow Trout
ST	Sheefish Trout

CODE	DESCRIPTION
Y	Fish Presence - Salmon
V	Fish Presence - Sport
P	Fish Presence - Regionally Significant
O	Fish Presence - Other
Y	Fish Observation - Salmon
V	Fish Observation - Sport
P	Fish Obs - Regionally Significant
O	Fish Observation - Other
Y	Fish Spawning Area
RB	Rainbow Trout
ST	Sheefish Trout

Source: MELP



“This product has been accepted as being in accordance with approved standards within the limits of Ministry quality assurance procedures. Users are cautioned that interpreted information on this product developed for the purposes of the Forest Practices Code Act and Regulations, for example stream classifications, is subject to review by a statutory decision maker for the purposes of determining whether or not to approve an operational plan.”

INVENTORY SOURCE INFORMATION

CODE	DESCRIPTION
BASE	Base Map
TRIM	1:20,000 TRIM Maps
NTS	1:50,000 NTS Maps
OTH	Other Map Source
STR SYM	Stream Symbol
INV	Field Inventory
SS	Summary
N.A	Not Applicable
OTH	Other

CODE	DESCRIPTION
LE SYM	Lake Symbol
INV	Field Inventory
SS	Summary
N.A	Not Applicable
OTH	Other

CODE	DESCRIPTION
APP	Aerial Photography
VID	Video, Approximate
VPC	Video, Corrected
OTH	Other
DATA	Field Inventory
SS	Summary
N.A	Not Applicable
OTH	Other

CODE	DESCRIPTION
AP	Aerial Photography
VID	Video
FISH	Fish Information
ENV	Environmental Inventory
ENV	Environmental Inventory
SS	Summary
N.A	Not Applicable
OTH	Other

CODE	DESCRIPTION
INV	Inventory - Group persons resp. for conducting inventory
MELP	Ministry of Environment, Lands & Parks
MOF	Ministry of Forests
GSC	Geological Survey of Canada
OTH	Other

FOREST PRACTICES CODE
RIPARIAN CLASSES
(STREAM CLASSIFICATION)

Riparian Class	Average Channel Width (m)	Reserve Zone Width (m)	Management Zone Width (m)	Total RMA Width (m)
S1 - Large River	> 100	0	100	100
S2 - Large River	> 20	0	20	20
S3 - Large River	> 5 < 20	10	20	50
S4 - Large River	1.5 < 5	20	30	40
S5 - Large River	< 1.5	0	30	30
S6 - Large River	< 3	0	30	30
S7 - Large River	< 3	0	20	20

BASE MAP INFORMATION

Projection: UTM

Datum: NAD83

UTM Zone: 9

INVENTORY SOURCE INFORMATION

BASE: TRIM

LOC: FDG

HAB: INV

DATE INV: 1998/08/23

STR SYM: INV

LK SYM: N.A

FISH: INV

INV MGNT: MELP

n:\active\2815\plots\interp